

Rotary Crosstown Greenway Upgrades

FULL RECOMMENDED DESIGN

Visual Summary: Seventh Avenue, between Fifth Street and Eighth Street



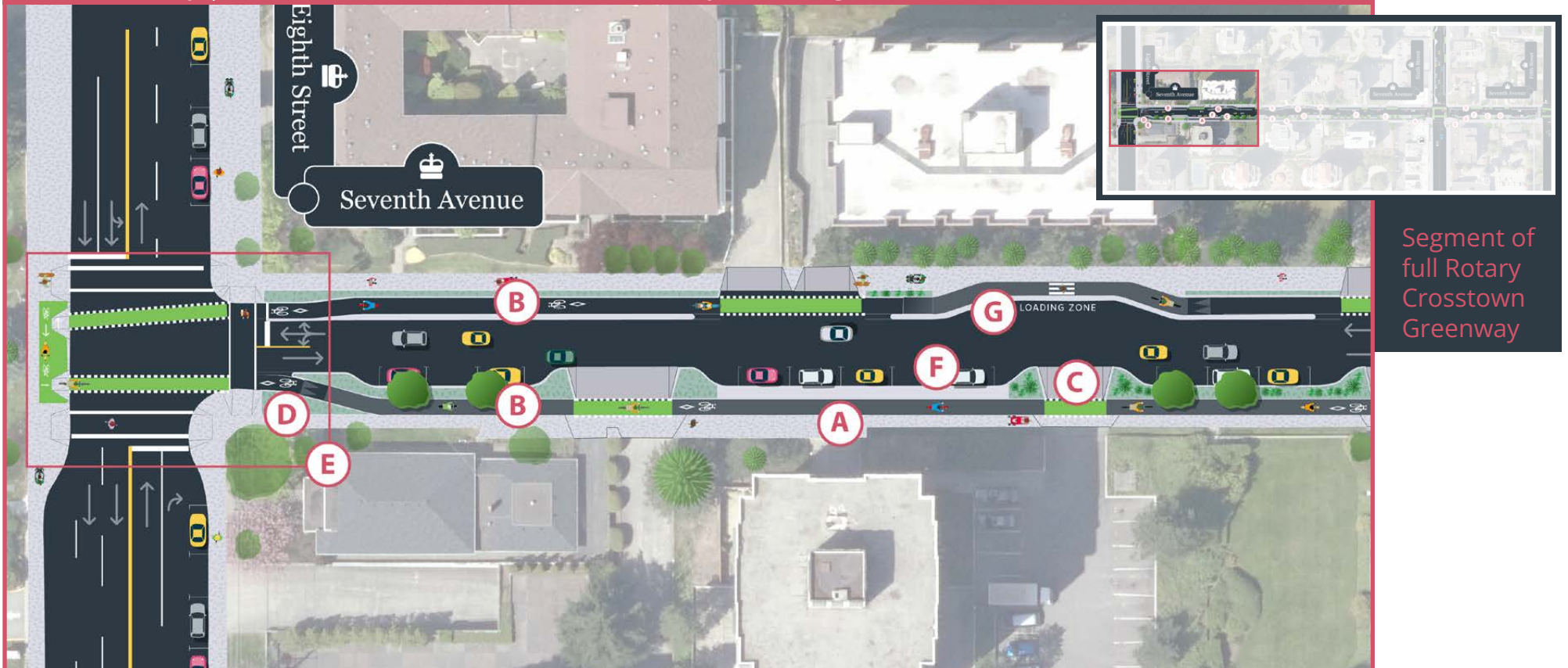
Key design features:

- (A)** A reconstructed sidewalk along the south side of Seventh Avenue to improve walking and accessibility
- (B)** Wider and realigned protected bicycle lanes with physical protection from vehicles that avoid the jogs in the current bicycle lanes due to existing utility poles
- (C)** Safety improvements at driveways along this section, including green conflict-zone markings, continuous raised sidewalk and bicycle lane across driveways on the south side of Seventh Avenue, and curb extensions on the south side to improve visibility
- (D)** Landscaping and seating at several locations on this section of the greenway
- (E)** Intersection improvements on Seventh Avenue at Fifth Street, Sixth Street and Eighth Street
- (F)** On-street parking maintained along the south side of Seventh Avenue
- (G)** Two loading zones maintained on the north side of Seventh Avenue
- (H)** Mid-Block Crosswalk on Seventh Avenue with raised crossing to provide safe crossing opportunity

FULL RECOMMENDED DESIGN:

Enlarged Versions Section-by-Section

Visual Summary | Section One: Seventh Avenue Immediately East of Eighth Street

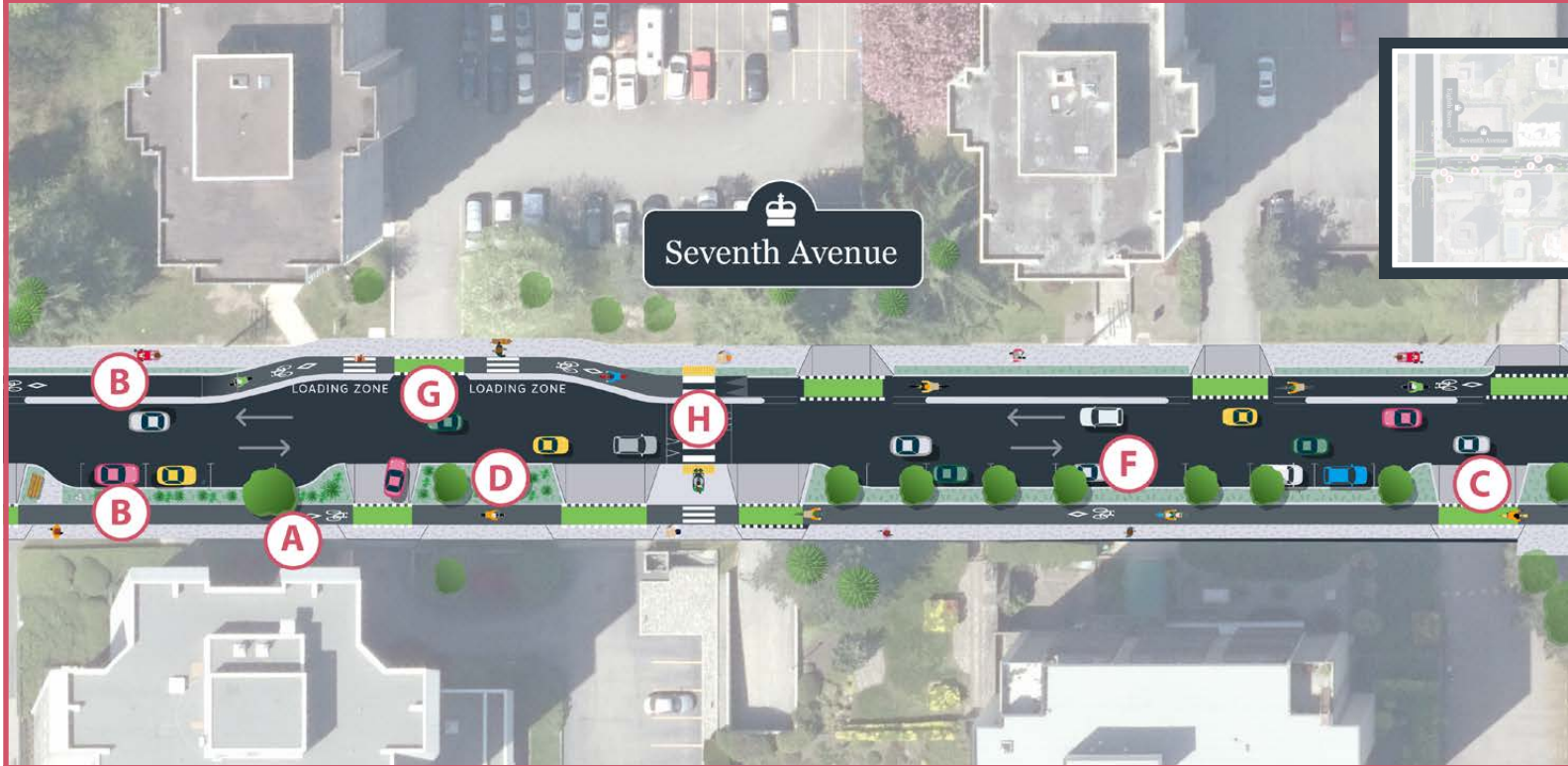


Key design features:

- (A)** A reconstructed sidewalk along the south side of Seventh Avenue to improve walking and accessibility
- (B)** Wider and realigned protected bicycle lanes with physical protection from vehicles that avoid the jogs in the current bicycle lanes due to existing utility poles
- (C)** Safety improvements at driveways along this section, including green conflict-zone markings, continuous raised sidewalk and bicycle lane across driveways on the south side of Seventh Avenue, and curb extensions on the south side to improve visibility
- (D)** Landscaping and seating at several locations on this section of the greenway
- (E)** Intersection improvements on Seventh Avenue at Fifth Street, Sixth Street and Eighth Street
- (F)** On-street parking maintained along the south side of Seventh Avenue
- (G)** Two loading zones maintained on the north side of Seventh Avenue

Scroll down for more of the corridor...

Visual Summary | Section Two: Seventh Avenue Mid-Block Between Eighth Street and Sixth Street



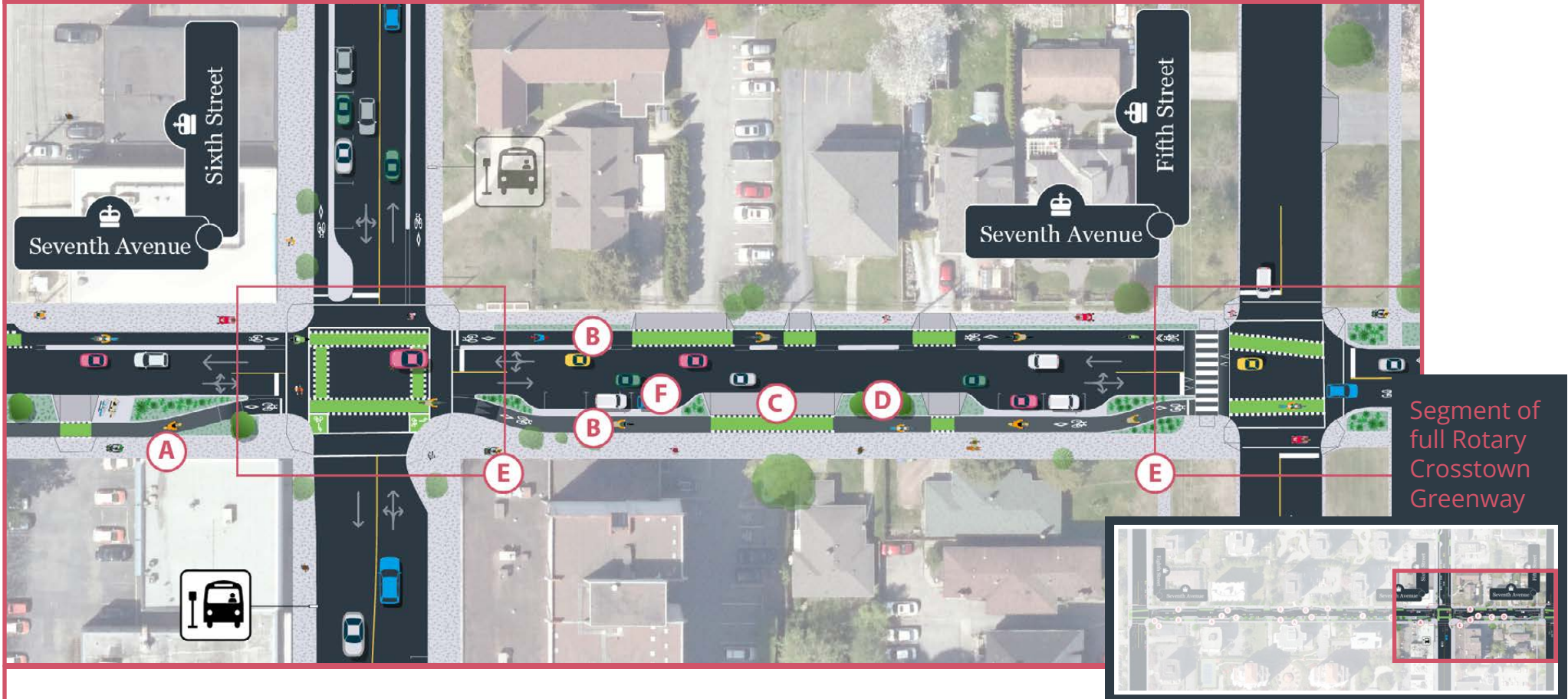
Segment of
full Rotary
Crosstown
Greenway

Key design features

- (A)** A reconstructed sidewalk along the south side of Seventh Avenue to improve walking and accessibility
- (B)** Wider and realigned protected bicycle lanes with physical protection from vehicles that avoid the jogs in the current bicycle lanes due to existing utility poles
- (C)** Safety improvements at driveways along this section, including green conflict-zone markings, continuous raised sidewalk and bicycle lane across driveways on the south side of Seventh Avenue, and curb extensions on the south side to improve visibility
- (D)** Landscaping and seating at several locations
- (F)** On-street parking maintained along the south side of Seventh Avenue
- (G)** Two loading zones maintained on the north side of Seventh Avenue
- (H)** Mid-Block Crosswalk on Seventh Avenue with raised crossing to provide safe crossing opportunity

Scroll down for more of the corridor...

Visual Summary | Section Three: Seventh Avenue West of Sixth Street and Between Sixth Street and Fifth Street



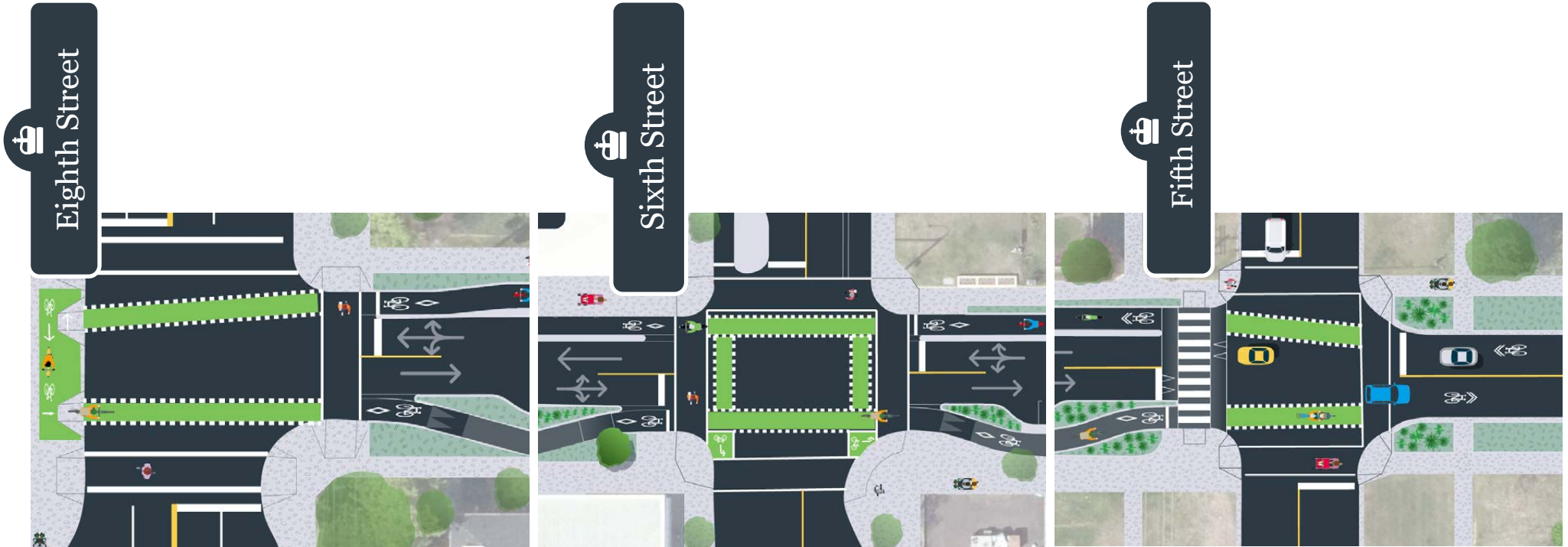
Key design features:

- (A) A reconstructed sidewalk along the south side of Seventh Avenue to improve walking and accessibility
- (B) Wider and realigned protected bicycle lanes with physical protection from vehicles that avoid the jogs in the current bicycle lanes due to existing utility poles
- (C) Safety improvements at driveways along this section, including green conflict-zone markings, continuous raised sidewalk and bicycle lane across driveways on the south side of Seventh Avenue, and curb extensions on the south side to improve visibility
- (D) Landscaping and seating at several locations
- (E) Intersection improvements on Seventh Avenue at Fifth Street, Sixth Street and Eighth Street
- (F) On-street parking maintained along the south side of Seventh Avenue

FULL RECOMMENDED DESIGN:

Enlargements of Specific Locations

Intersection Improvements at Seventh Avenue and Eighth Street, Sixth Street and Fifth Street



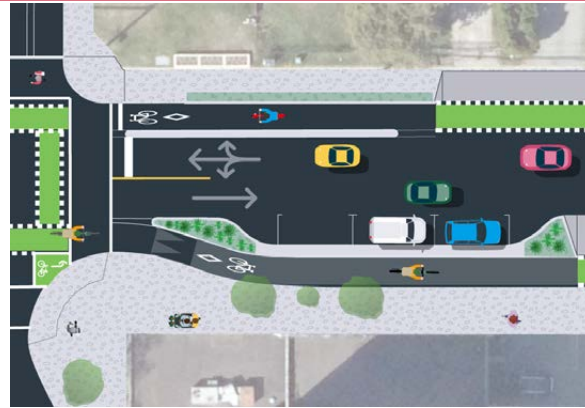
Parking Options at Various Locations

Seventh Avenue and Eighth Street
Southeast Corner

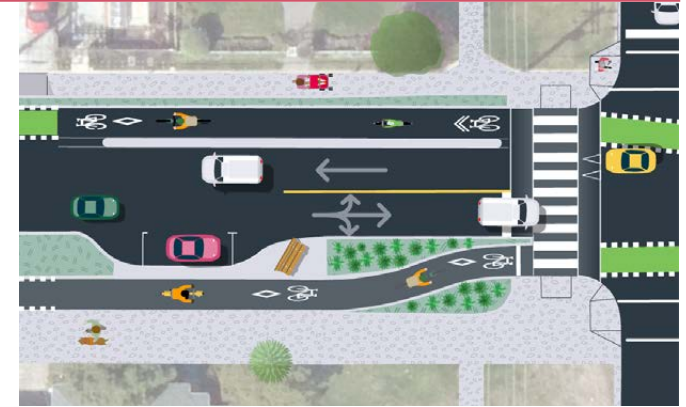
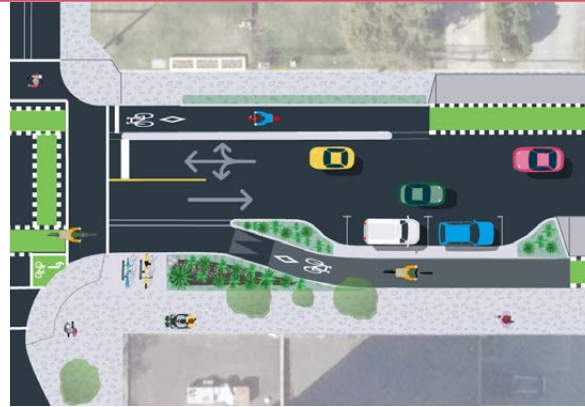
Seventh Avenue and Sixth Street
Southeast Corner

Seventh Avenue and Fifth Street
Southwest Corner

On-street parking in recommended design



Alternative options removing on-street parking for green space



Loading Zones on the North Side of Seventh Avenue between Sixth Street and Eighth Street



Mid-Block Crosswalk on Seventh Avenue with raised crossing to provide safe crossing opportunity

